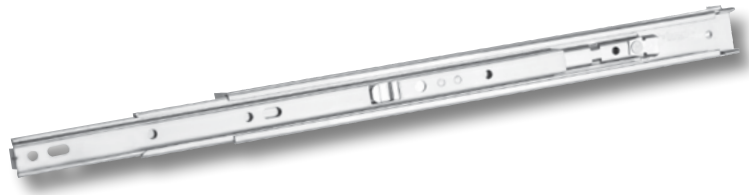


Server Slide Collection

Slides for Electronic Enclosure Applications



Accuride's server slide collection offers a selection of solutions for chassis ranging in size from 1U to 8U.

These products include features specifically designed to address the unique requirements of enclosures.

Narrow Side Space

A critical element in rack applications, this collection offers narrow cross sections to maximize chassis space, while still providing solid load capacities.

Over Travel

Access to wiring and connections at the back of chassis is important. These slides provide two inches of over travel, affording plenty of access to components.

Adjustable Mounting Brackets

Included in standard packaging, the mounting brackets for these products are engineered to fit the greatest range of enclosure depths, rail configurations, and hole styles.

Lock-Out

All of the slides feature a mechanism to lock chassis in the extended position. This makes for safe and secure access when performing maintenance or service.

Disconnect Method

These slides all include a disconnect method, which allows the end user to remove the chassis from the enclosure.



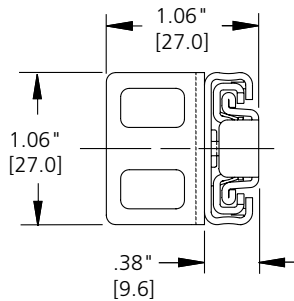
Server Slide Collection



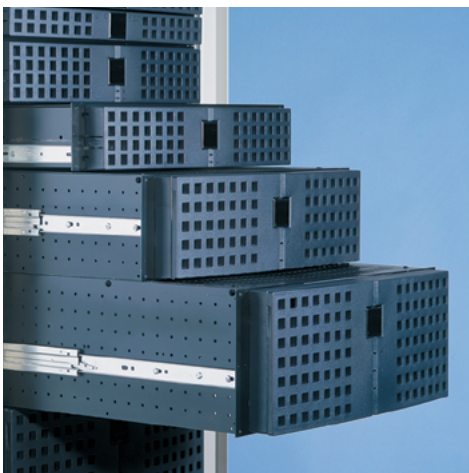
Model 2807

1U-2U Chassis

This product is an economical, light-duty friction slide. The most outstanding feature is the exceptionally small profile, which is just over 1-inch tall, making it a good choice for lightweight 1U applications.



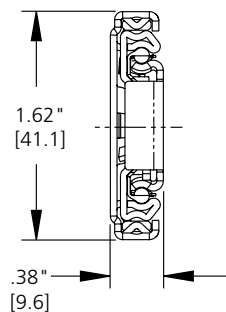
- Up to 100-lb. load rating
- .38" side space
- 2" over travel
- Latch disconnect
- Lock-out
- Enhanced friction movement
- Fixed front bracket
- Attached rear bracket provides 2" of adjustment
- Brackets compatible with 5/8" and 1/2" pitch patterns
- Slotted holes on brackets adapt to round, square, or tapped holes.
- Even lengths 10"-30"
- Clear zinc finish



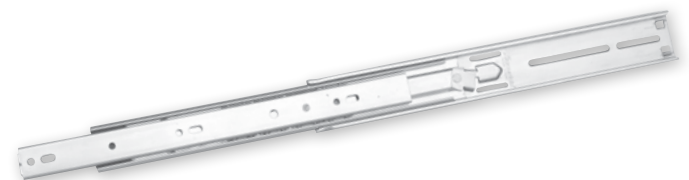
Model 2907

1U-4U Chassis

This is a full ball-bearing slide that provides smooth movement for medium-duty chassis applications. It comes with a removable locator pin that supports and holds the slide in place during installation. The brackets offer a little more length adjustment than the 2807 and include an embossed hole that self-aligns to racks with square mounting holes.



- Up to 115-lb. load rating
- .38" side space
- 2" over travel
- Lever disconnect
- Lock-out
- Locator pin holds slide in place during installation.
- Adjustable mounting brackets provide 2" of adjustment and accommodate round, square, or tapped holes.
- Even lengths 12"-30"
- Clear zinc finish





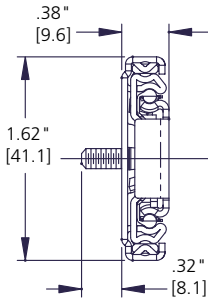
Model 2907WB offers reversible brackets that fit all pitch patterns, allowing for more options when positioning chassis.



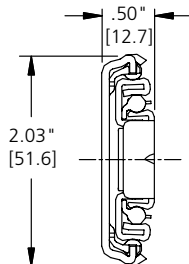
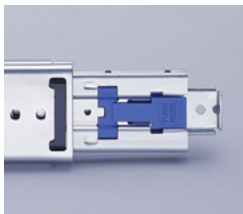
Model 2907WB

1U-4U Chassis

This ball bearing slide provides a single-point solution for the white box enclosures category. It offers standard or tool-less pin mounting of the chassis member, and a unique thumbscrew fastener that adapts to round, square, or tapped holes.



- 120-lb. load rating
- .38" side space
- 2" over travel
- Lever disconnect
- Lock-out
- Reversible brackets fit both 5/8" and 1/2" pitch patterns, and dual 5/8" patterns.
- Brackets adjust to fit a full range of cabinet depths and chassis setback positions.
- Rear bracket offers an adjustment range of up to 9" .
- Slide-to-chassis hole patterns fit multiple chassis mounting configurations.
- Even lengths 22"-26"
- Clear zinc finish

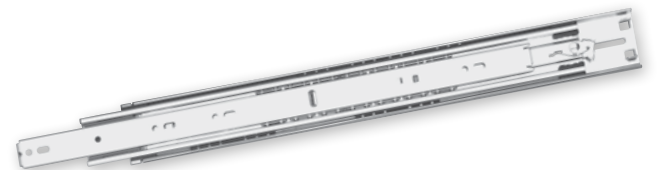


Model 3507

4U-8U Chassis

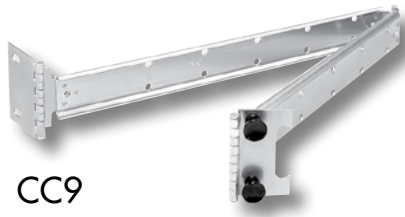
Model 3507 has a beefy load capacity of a constant 200 pounds for all slide lengths offered—with a mere 1/2-inch cross section. This is the slide choice for chassis from 4U to 8U in height. This product features One-Motion Insertion, which eases the insertion of large, heavy chassis into enclosures.

- 200-lb. load rating
- .50" side space
- 2" over travel
- Lock-out
- Pinch-free latch disconnect located at the front of the slide.
- One-Motion Insertion simplifies reinsertion and installation
- Guide pins provide stability for cable management attachment directly to slides.
- Embossed holes on brackets adapt to round, square, or tapped rack holes
- Rear bracket provides two inches of adjustment.
- Even lengths 16"-30"
- Clear zinc finish



Cable Carriers

Accuride offers two standard cable carriers, which provide the means to collect wires into a neat bundle. This prevents sagging or snagging at the back of the chassis. These products are compatible with the entire server slide collection.

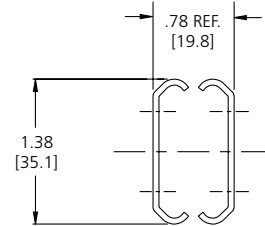


CC9

CC9

For use with round cables

- CC9-1: Standard 23" long when fully extended
- CC9-2: Manufactured to order, 29" long when fully extended
- Quick disconnect chassis fasteners
- Designed for chassis 2U and larger
- Clear zinc finish

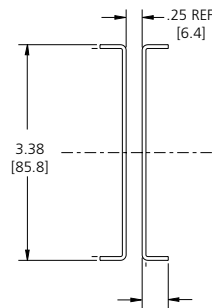


CC11

CC11

For use with ribbon cable

- 28.24" long when fully extended
- Wide arm
- Use customer-approved cable ties
- Clear zinc finish



Custom Requirements

For special order or large volume projects, talk to your Accuride rep about the special features such as customized brackets and cable carriers, tool-less solutions, and enhanced performance features.

For more movement solutions visit [accuride.com](http://www accuride.com)



12311 Shoemaker Avenue
Santa Fe Springs, CA 90670
(562) 903-0200
(562) 903-0208 Fax
www accuride.com

Follow us



2257-R1-0616-1.5M-ALA

Authorized Distributor



Accuride printed materials are:
• Printed with soy based inks.
• Printed on paper that contains recycled materials and conforms to the latest sustainable arabiculture guidelines.