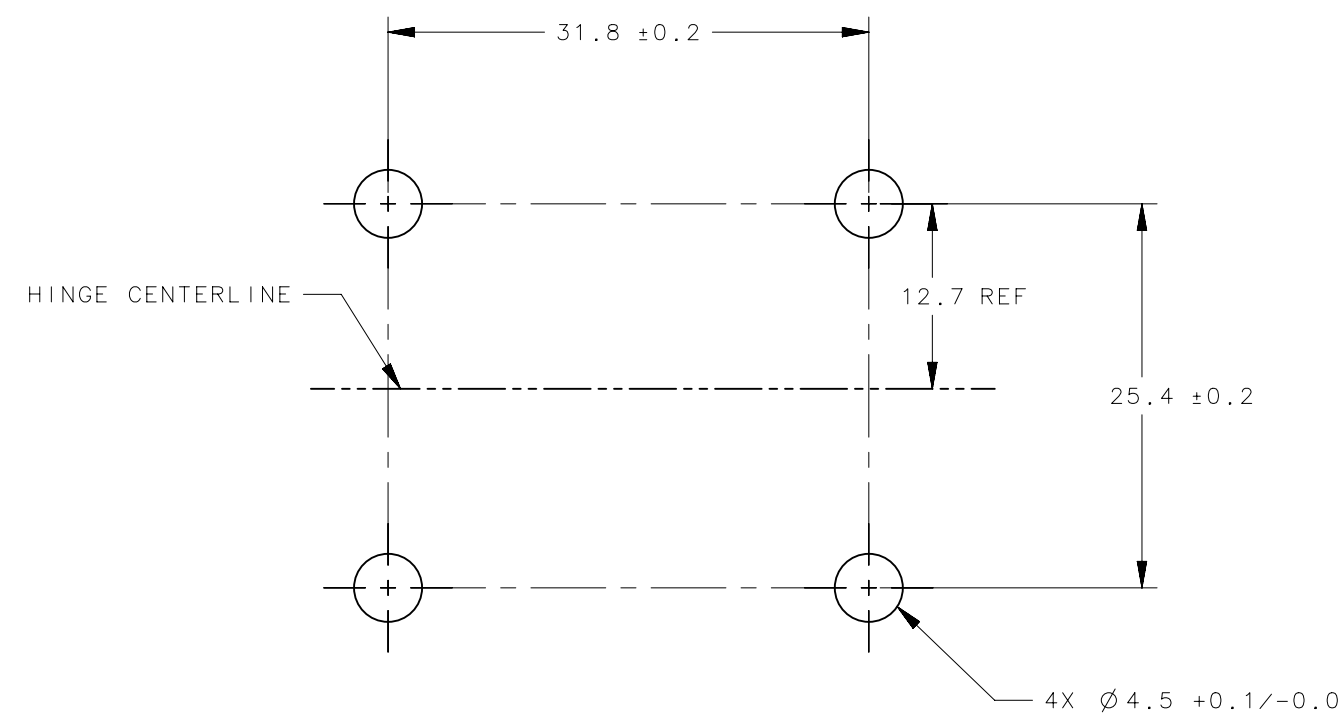
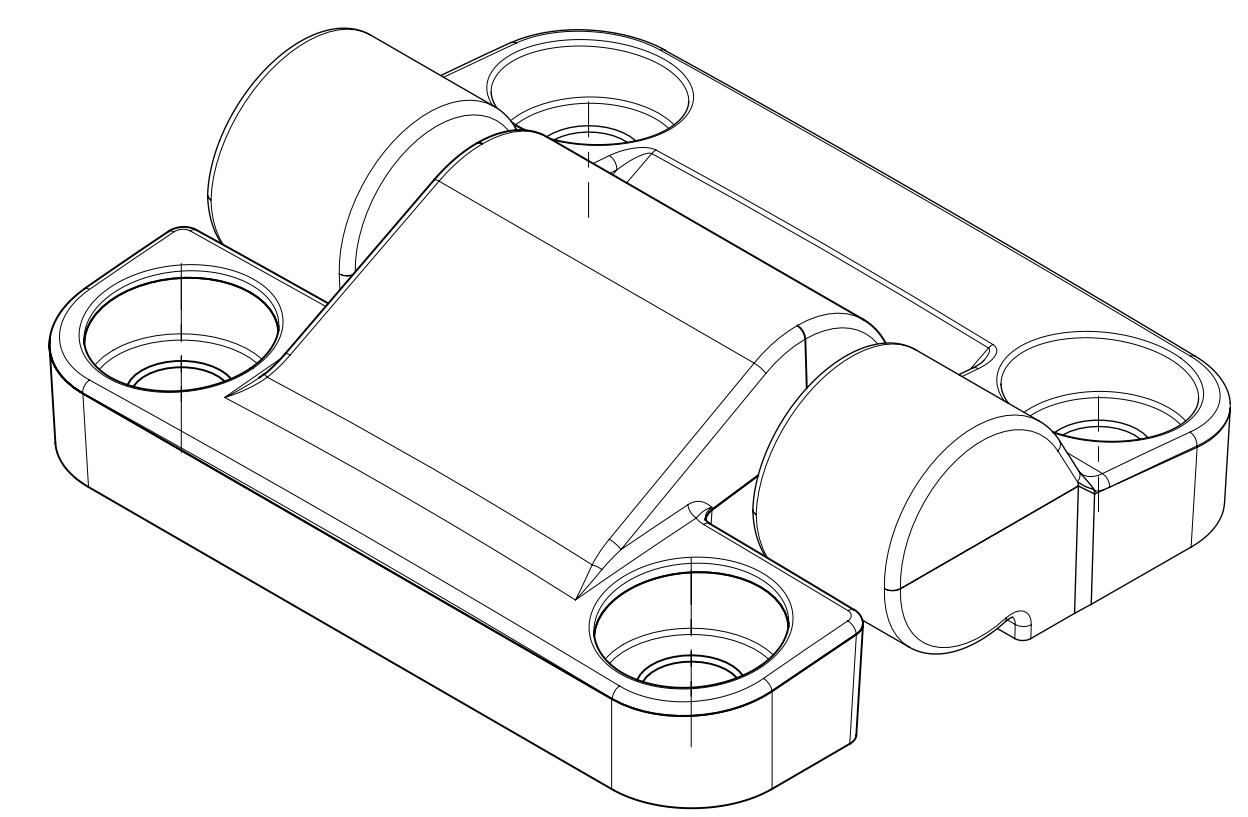


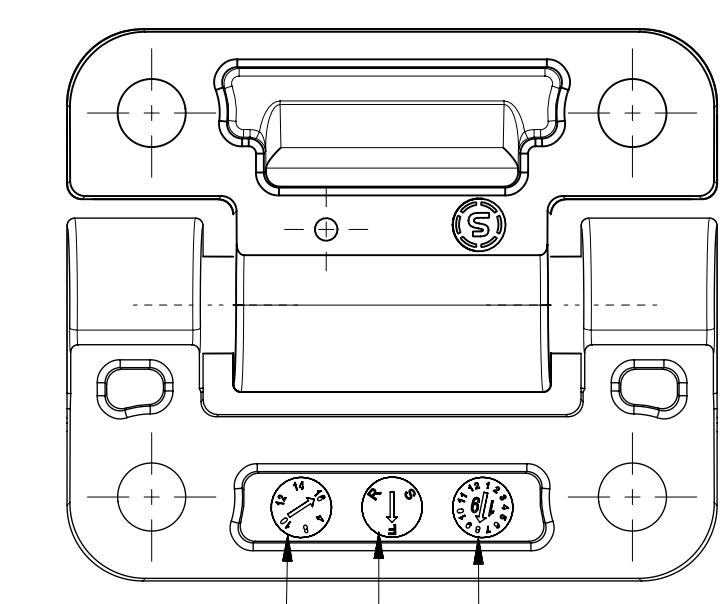
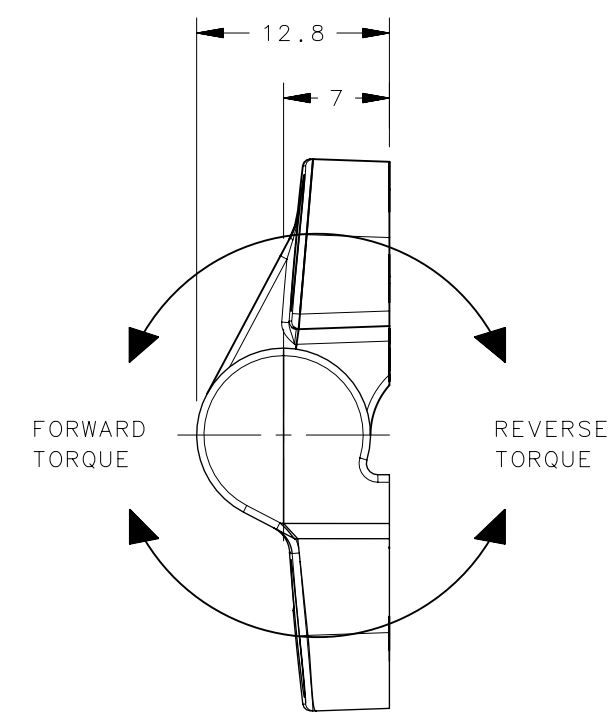
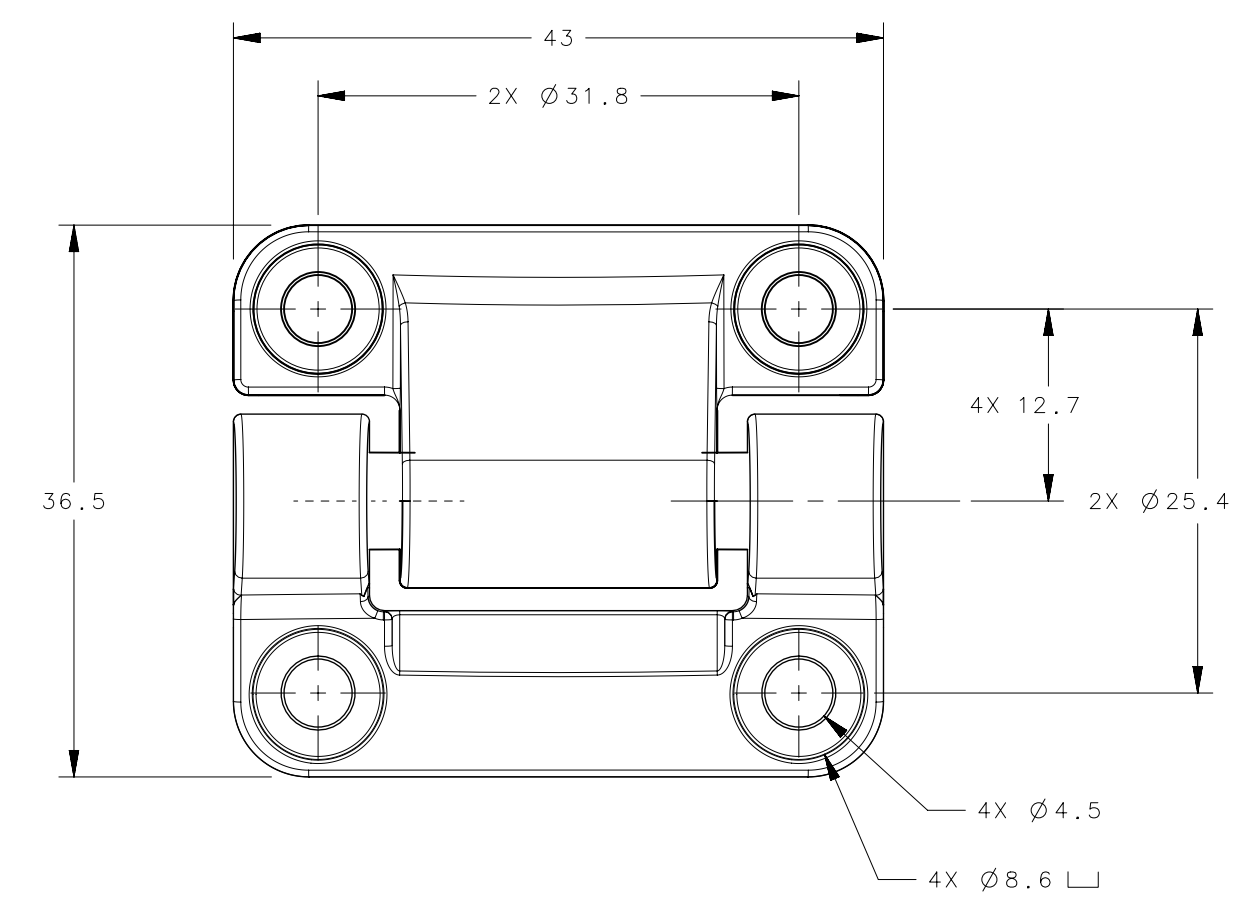
REVISION HISTORY			
REV	DATE	BY	DESCRIPTION
A	30JAN2024	AJH/LCR	PRN: 2024-0199



PANEL PREPARATION



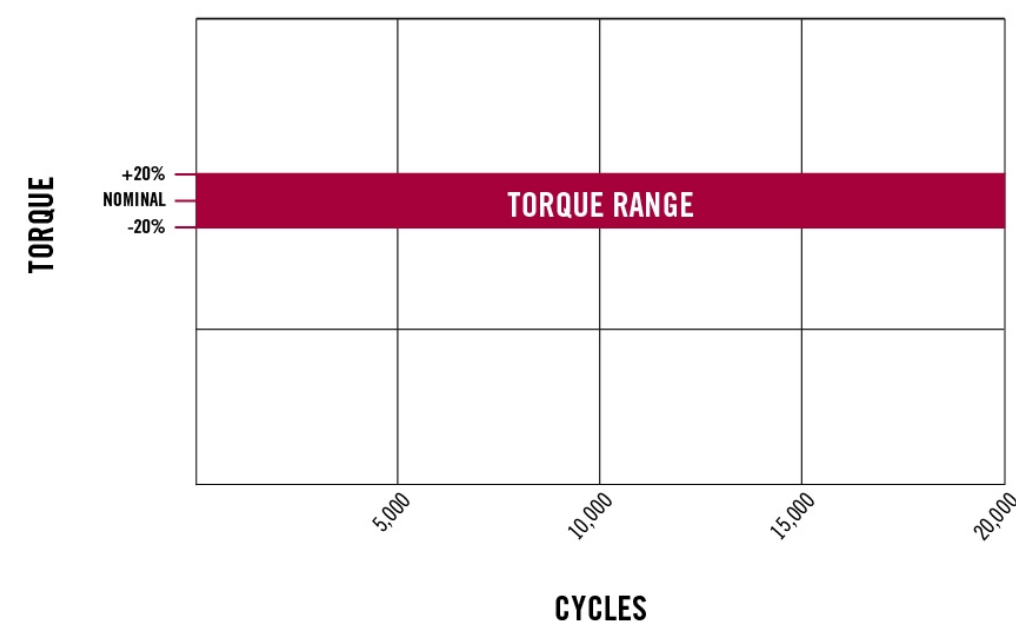
SCALE 3:1



TORQUE VALUE
TORQUE DIRECTION
MANUFACTURE DATE (MONTH / YEAR)

FINISH	
-ZZ	MATERIAL, COLOR
E6-50-3XXX-10	NYLON, WHITE
E6-50-3XXX-20	NYLON, BLACK

TYPICAL TORQUE TREND FOR E6-5X-XX-XX (REFERENCE ONLY)



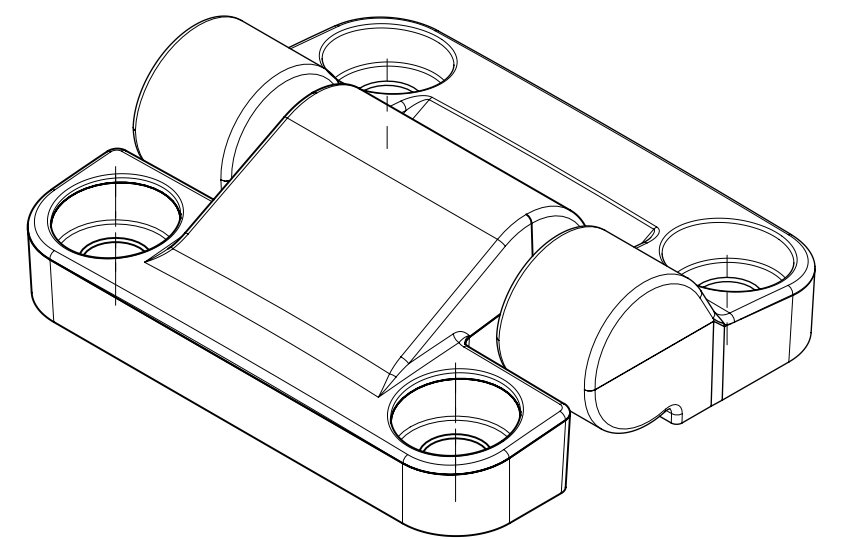
- NOTES:
- PERFORMANCE TORQUE TOLERANCE $\pm 20\%$ OVER 20,000 CYCLES
* - MINOR RESIDUAL TORQUE DUE TO THE MOLDING PROCESS FOR MINIMAL AMOUNT OF CYCLES SHOULD BE EXPECTED
 - DESIGNED TO ACCEPT M4 SCREW OR EQUIVALENT
 - MATERIAL AND FINISH:
HINGE LEAVES AND HOUSING: NYLON
INTERNAL COMPONENTS: ZINC, HARDENED STEEL, ALUMINUM
 - SHOWN IN SHIPPING POSITION
 - MAX BACKLASH $\pm 2^\circ$ AFTER 20,000 CYCLES EXCLUDING FREE SWINGING VERSION.

PART NUMBER	FORWARD TORQUE, Nm (in-lbf)	REVERSE TORQUE, Nm (in-lbf)
E6-50-300-ZZ	FREE SWINGING *	
E6-50-314S-ZZ	1.58 (14)	
E6-50-310S-ZZ	1.13 (10)	
E6-50-308S-ZZ	0.90 (8)	
E6-50-304S-ZZ	0.45 (4)	
E6-50-316F-ZZ	1.81 (16)	1.27 (11.2) REF
E6-50-312F-ZZ	1.36 (12)	0.95 (8.4) REF
E6-50-308F-ZZ	0.90 (8)	0.63 (5.6) REF
E6-50-304F-ZZ	0.45 (4)	0.32 (2.8) REF
E6-50-316R-ZZ	1.27 (11.2) REF	1.81 (16)
E6-50-312R-ZZ	0.95 (8.4) REF	1.36 (12)
E6-50-308R-ZZ	0.63 (5.6) REF	0.90 (8)
E6-50-304R-ZZ	0.32 (2.8) REF	0.45 (4)

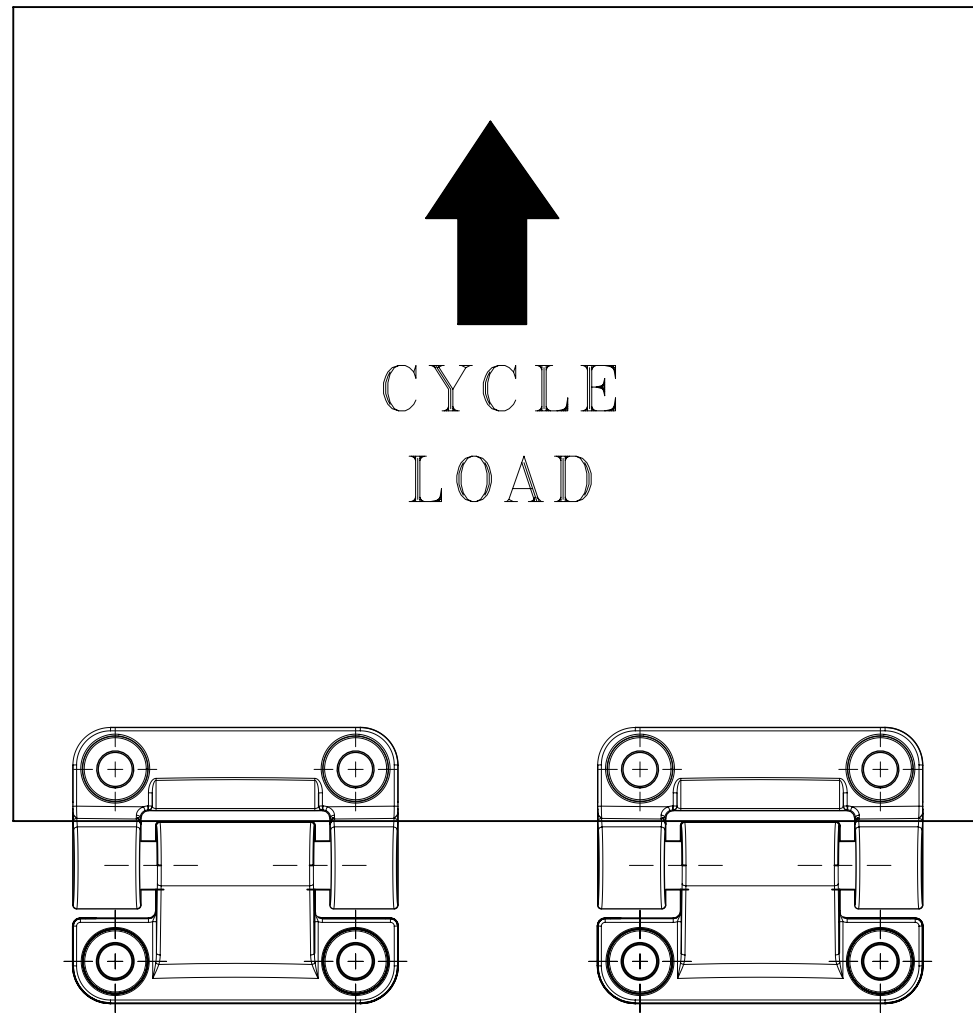
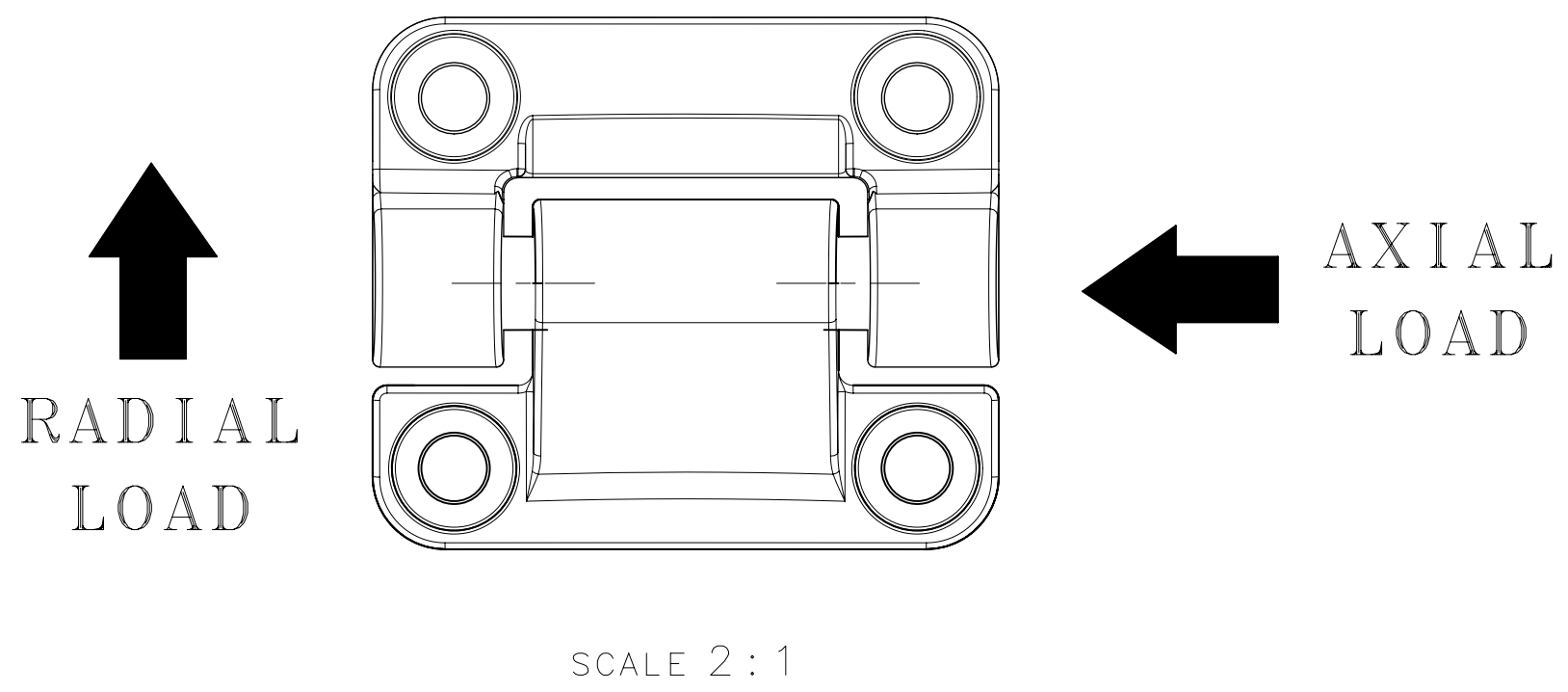
CPB NUMBER 2018-0439	THIRD ANGLE PROJECTION		southco CONNECT · CREATE · INNOVATE
	MILLIMETERS [IN]		
SURFACE AREA XXXXXmm ²	TOLERANCES UNLESS OTHERWISE NOTED		DESCRIPTION HINGE & CONTROLLED MOTION DEVICE
VOLUME XXXXXmm ³	ALL DIMENSIONS WITHOUT TOLERANCES ARE FOR REFERENCE ONLY.		SIZE SYSTEM C NX
PROPRIETARY ITEM	PER ASME Y14.5M-2009		DWG NO. J-E6-50-300
EXCEPT FOR USES EXPRESSLY GRANTED IN WRITING, INFORMATION DISCLOSED HEREON IS CONFIDENTIAL AND ALL RIGHTS, PATENT AND OTHERWISE, ARE RESERVED BY SOUTHCO, INC.	DRAWN BY JJT	DATE 16SEP2019	SCALE 1:1
			SHEET 1 OF 1

PART NUMBER	E6-19P CARTRIDGE	FORWARD TORQUE, Nm (in-lbf)	REVERSE TORQUE, Nm (in-lbf)	AVERAGE ULTIMATE RADIAL LOAD, N/lbf		AVERAGE ULTIMATE AXIAL LOAD, N/lbf	CYCLE LIFE	MAXIMUM WORKING LOAD, N/lbf	
				INLINE	PERPENDICULAR			AXIAL	RADIAL, INLINE
E6-50-314S-ZZ	E6-19P-214S-26	1.58 (14)							
E6-50-310S-ZZ	E6-19P-210S-26	1.13 (10)							
E6-50-308S-ZZ	E6-19P-208S-26	0.90 (8)							
E6-50-304S-ZZ	E6-19P-204S-26	0.45 (4)							
E6-50-300-ZZ	-	FREE SWINGING							
E6-50-316F-ZZ	E6-19P-216F-26	1.81 (16)	1.27 (11.2) REF	2400/539	1040/234	1440/323	20,000	200/45	200/45
E6-50-312F-ZZ	E6-19P-212F-26	1.36 (12)	0.95 (8.4) REF						
E6-50-308F-ZZ	E6-19P-208F-26	0.90 (8)	0.63 (5.6) REF						
E6-50-304F-ZZ	E6-19P-204F-26	0.45 (4)	0.32 (2.8) REF						
E6-50-316R-ZZ	E6-19P-216R-26	1.27 (11.2) REF	1.81 (16)						
E6-50-312R-ZZ	E6-19P-212R-26	0.95 (8.4) REF	1.36 (12)						
E6-50-308R-ZZ	E6-19P-208R-26	0.63 (5.6) REF	0.90 (8)						
E6-50-304R-ZZ	E6-19P-204R-26	0.32 (2.8) REF	0.45 (4)						

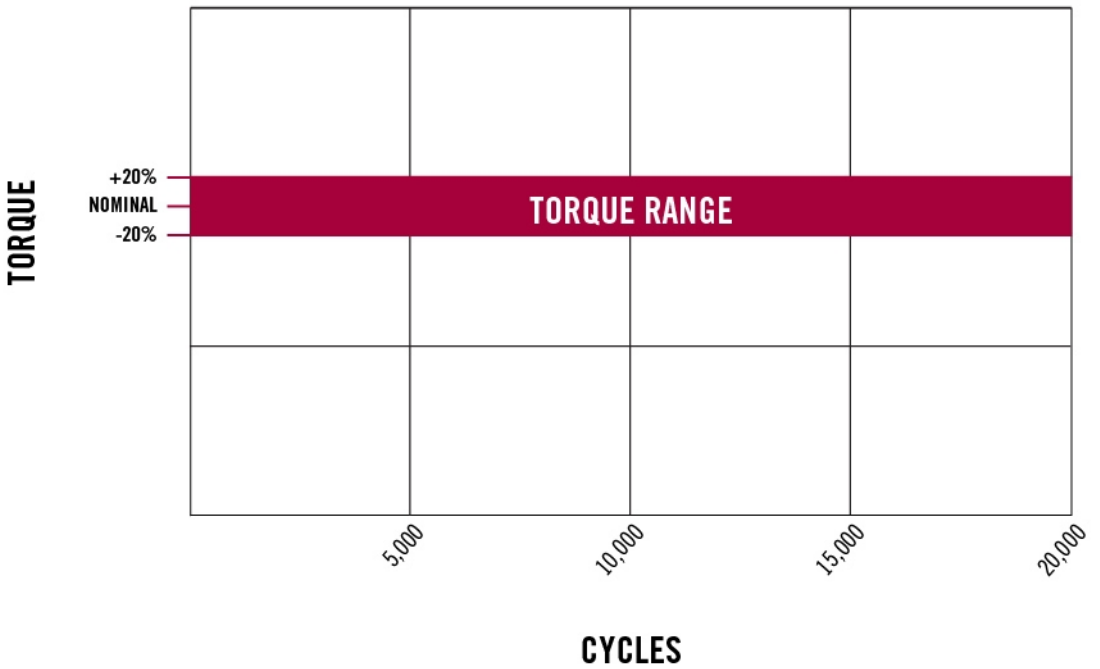
REVISION HISTORY			
REV	DATE	BY	DESCRIPTION
A	14FEB2024	AJH/NJF	PRN: 2024-0257



SOUTHCO PERFORMANCE GUIDELINES:
 THE PERFORMANCE GUIDELINES SHOWN ON THIS PAGE ARE SUPPLIED AS A GENERAL GUIDE ONLY, AS CONDITIONS VARY WITH EACH APPLICATION AND METHOD OF INSTALLATION. STRENGTH DATA GIVEN IS FOR FAILURE OF THE PRODUCT OR FOR SUFFICIENT DEFORMATION TO MAKE THE PRODUCT INOPERABLE. NO SAFETY FACTOR HAS BEEN APPLIED IT IS RECOMMENDED THAT THE USER REQUEST A PRODUCT SAMPLE FOR TESTING TO DETERMINE THE SUITABILITY OF THE PRODUCT FOR THE PURPOSE INTENDED AND USER'S PARTICULAR APPLICATION.



TYPICAL TORQUE TREND FOR E6-5X-XX-XX (REFERENCE ONLY)



- NOTES:
- ONE CYCLE = CLOSED POSITION TO OPEN POSITION AT 180° PLUS RETURN TO INITIAL CLOSED POSITION.
 - TORQUE SPECIFICATIONS AT A CYCLE LIFE OF 20,000.
 - PERFORMANCE TORQUE TOLERANCE ±20% OVER 20,000 CYCLES
 - CYCLING TESTING WAS CONDUCTED USING THE FOLLOWING PROFILE:
 - 5,000 CYCLES AT -20°C
 - 10,000 CYCLES AT AMBIENT
 - 5,000 CYCLES AT 80°C
 - CYCLE TEST CONDUCTED TILT MOVEMENT TILT TEST USING A 1.13 kg (2.5 lbf) TEST DISPLAY PANEL.
 - FOR TEST REPORTS SEE trE6-1395455.

THIRD ANGLE PROJECTION	MILLIMETERS [IN]	CONNECT · CREATE · INNOVATE		
				DESCRIPTION: HINGE & CONTROLLED MOTION DEVICE
TOLERANCES UNLESS OTHERWISE NOTED: UP TO 0.5 ±0.05 OVER 0.5 UP TO 6 ±0.1 OVER 6 UP TO 30 ±0.2 OVER 30 ±0.3 ANGLES ±1°		SIZE: C	SYSTEM: NX	DWG NO.: TD-E6-50-300
PROPRIETARY ITEM <small>EXCEPT FOR USES EXPRESSLY GRANTED IN WRITING, INFORMATION DISCLOSED HEREON IS CONFIDENTIAL AND ALL RIGHTS, PATENT AND OTHERWISE, ARE RESERVED BY SOUTHCO, INC.</small>		DRAWN BY: AJH	DATE: 16NOV2022	SCALE: 1:1 SHEET: 1 OF 1