

Concealed hinges

Concealed hinges for surface mounted doors or nested doors

Concealed hinge - 110° opening

Heavy duty concealed hinge.

Tested to 10,000 cycles using 2 hinges with a door weight of 30 kg measuring 800mm x 600mm.

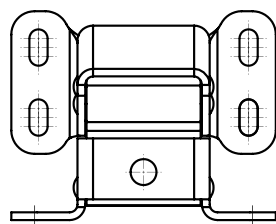
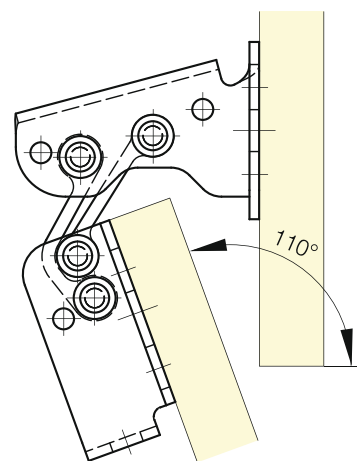
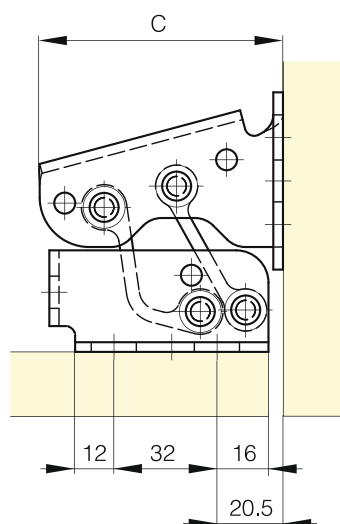
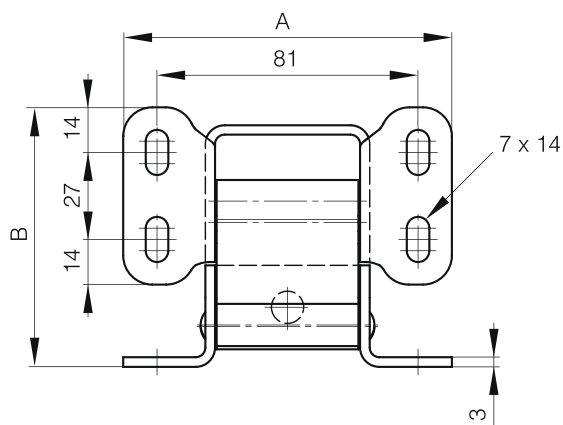
Links in anodised aluminium.

For each part number, the oblong holes position is different.

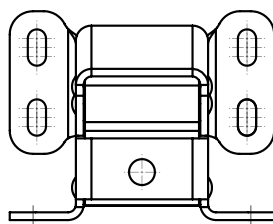
Please ask us for more information.



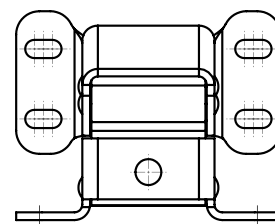
Part number	Material	Finish	A	B	C	Weight (g)
70-1-3557	steel	zinc plated	102	80.5	76	520
70-1-3683	steel	zinc plated	102	80.5	76	520
70-1-3684	steel	zinc plated	102	80.5	76	520



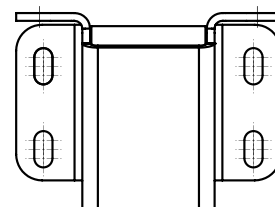
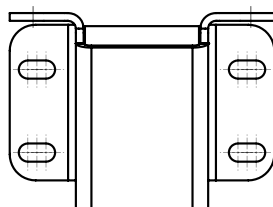
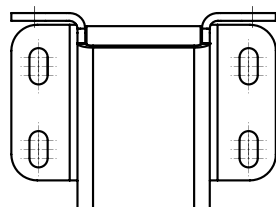
70-1-3557



70-1-3683



70-1-3684





Concealed hinge – Opening 110°

Launch presentation

January 2025

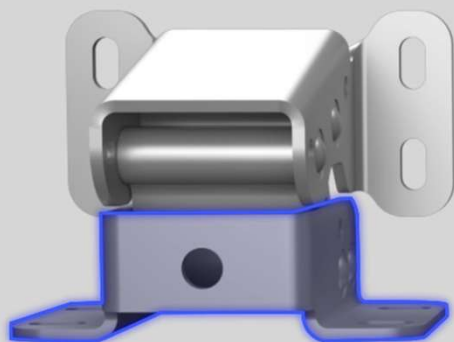
PINET®

Introduction - Background



- Pinet Industrie is a product leader in concealed hinges for industrial applications & specific kinematic during opening
- The standard offer is based on:
 - Concealed hinge 70-1-3557 with oblong holes
- Some customers told us that:
 - The oblong holes are perfect but not always on the desired setting
→ To provide a complete solution to meet the customer's need
- Our objective is to offer a new product with:
 - Other oblong holes positioning
→ To diversify the concealed hinges range
- A new product is launched with 2 part numbers

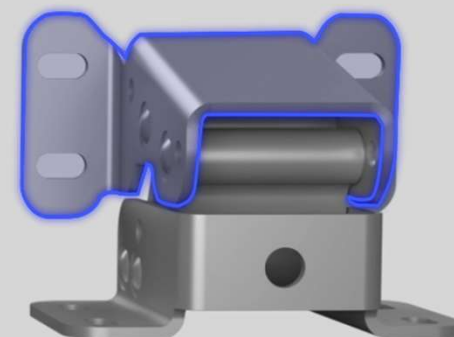
Features - Models



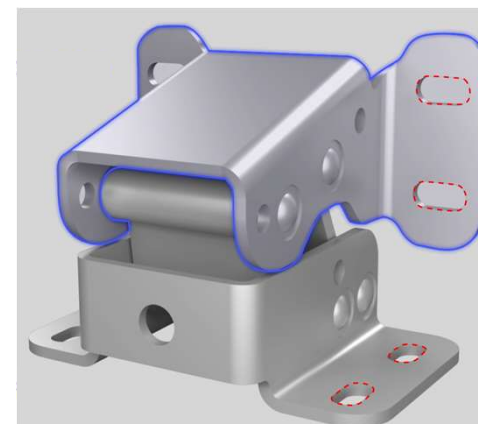
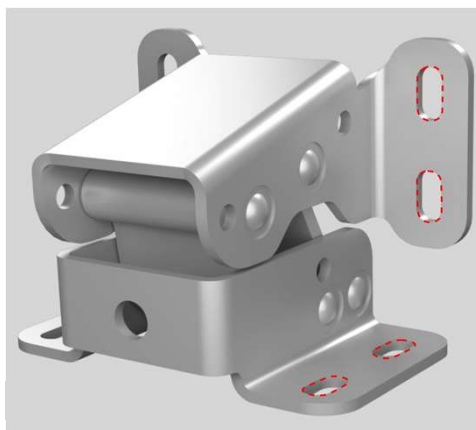
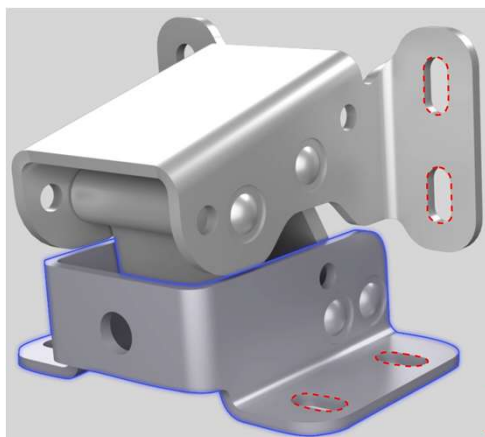
70-1-3683
NEW



70-1-3557
Pinet catalogue p.70



70-1-3684
NEW



Features - Models



- Part number:

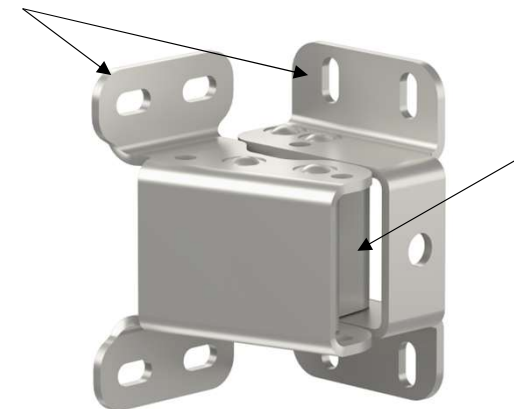
- 70-1-3557 (already on catalogue)
- **70-1-3683**
- **70-1-3684**

Same size / material / opening angle,
Only oblong hole different on plate

- Material:

- Steel for plate with zinc plated finish
- Aluminum for multi-links

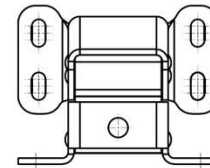
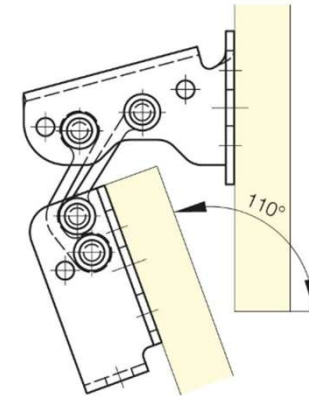
Plate



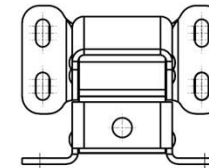
Multi-link

Features - Models

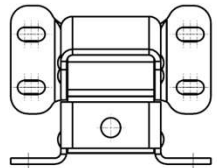
- Opening angle : 110°
- Door thickness max = 25 mm
- Oblong holes for adjustment
- Vertical & horizontal applications



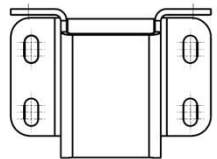
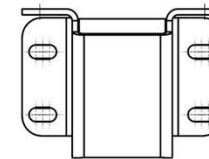
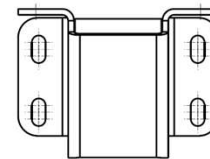
70-1-3557



70-1-3683



70-1-3684



Features - Models



- Possibility of setting : **Nested doors setup**



Possibility	70-1-3557	70-1-3683	70-1-3684
X Direction		+/- 4mm	+/- 4mm
Y Direction	+/- 4mm		+/- 4mm
Z Direction	+/- 4mm	+/- 4mm	

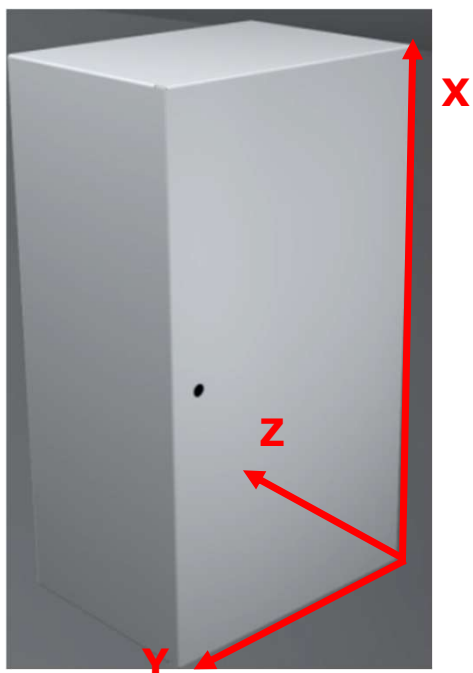
Examples for 70-1-3557 :



Features - Models

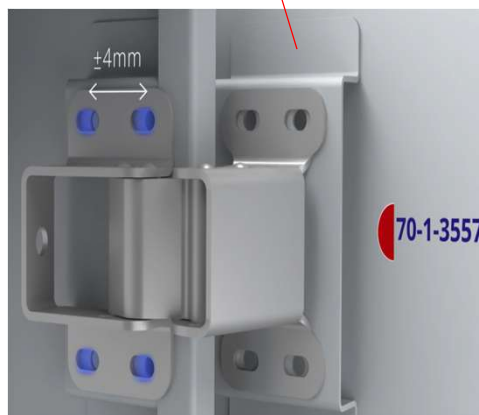
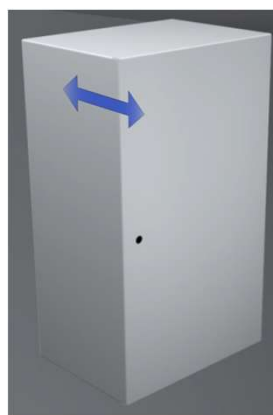


- Possibility of setting : **Surface mounted doors setup**



Possibility	70-1-3557	70-1-3683	70-1-3684
X Direction		+/- 4mm	+/- 4mm
Y Direction	+/- 4mm	+/- 4mm	
Z Direction	+/- 4mm		+/- 4mm

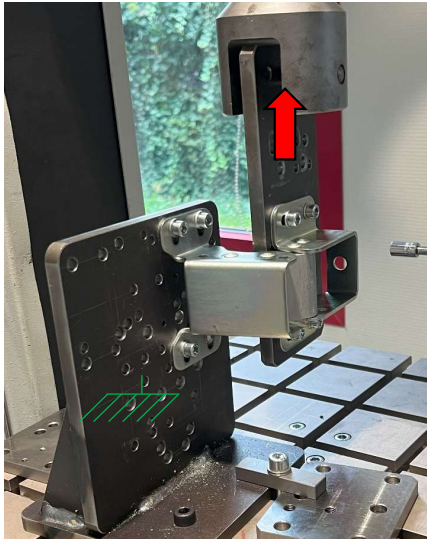
Examples for 70-1-3557 :



Features – Mechanical performances & Cycling test



- Shear test:
 - Open position
 - Break value → 12kN



Distortion of axes and
multilink parts

- Shear test:
 - Close position
 - Break value → 8kN



Distortion of axes and
multilink parts

$W_{\text{max_validated}}$
= 30Kg

Values for 2 hinges

Door: 800mmx600mm

Weight: 2Kg

- Proper functioning during **10 000 cycles** (open/close)

Benefits



- **Concealed** hinge
- **110°** opening
- For surface **mounted doors** or **nested doors**
- Multi-link design:
 - **Specific kinematic** (depending on setting)
- Oblong holes: → **With different possibilities thanks to 3 part numbers**
 - Make **adjustment** easier



Pricing and availability



- Pricing:

PINET References	Designation	Agent EXP
70 1 3557	Concealed hinge 110°	16,18 €
70 1 3683	Concealed hinge 110°	16,18 €
70 1 3684	Concealed hinge 110°	16,18 €

- Packaging:

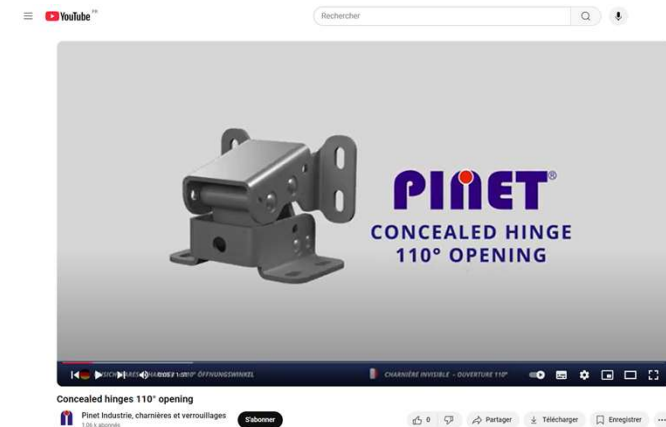
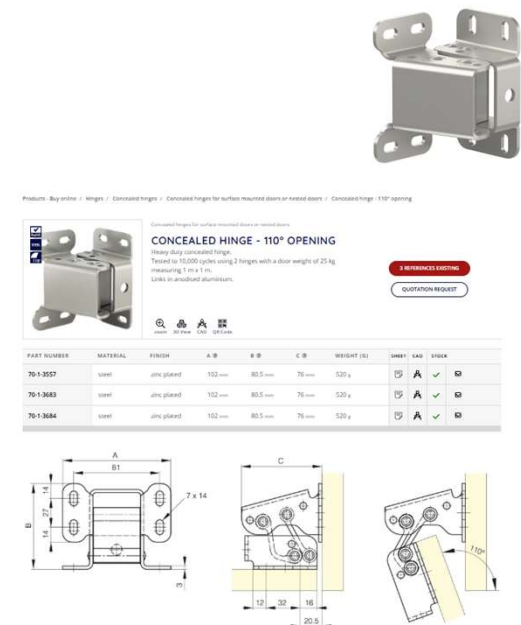
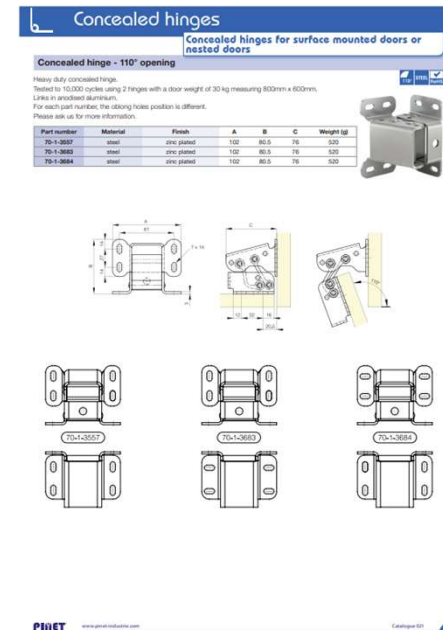
- Parcel of 20 parts

- Availability:

- 70-1-3683 : 625 parts in stock
- 70-1-3684 : 625 parts in stock

Marketing tools

- Products available on website
- Catalogue pages available
- CAD files available on Trace Parts
- Youtube video



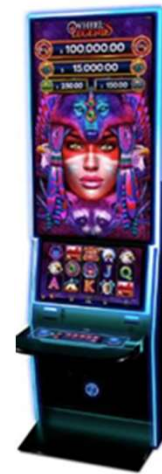
Ideas of application



- Interactive terminals



- Sheet metal industry



- Construction machinery

Food truck side door:



Hood of a lawn mower:

