

Control knurled knobs

With pointer, Duroplast

MATERIAL

Phenolic based (PF) Duroplast, black colour, glossy finish.
White pad-printed index line, placed at 180° from the transverse pressure screw.

STANDARD EXECUTION

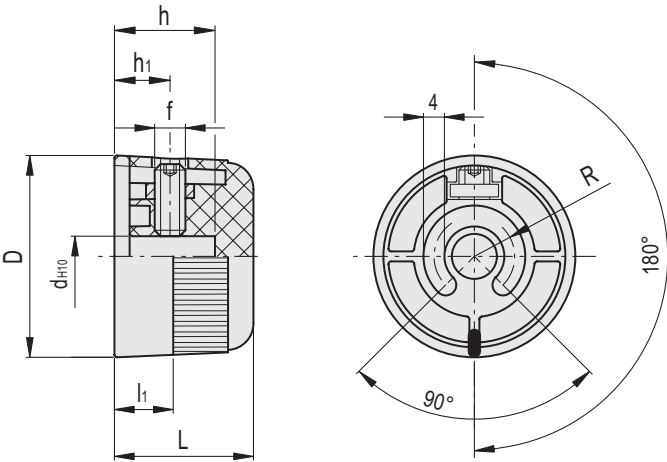
Plain blind hole, fixing by means of a transverse pressure screw according to UNI 5929-85 in AISI 304 stainless steel (headless screw with hexagonal socket and cupped end) which screws into the AISI 304 stainless steel nut. Supplied.

FEATURES

A limited manoeuvre angle is possible by fitting stop pins in the rear guide slot.



ELESA Original design



Code	Description	D	dH10	L	l1	h	h1	f	R	△
66861	MI.304/35 N-6	35	6	24.5	10	18	11	M5	6.2	19
66863	MI.304/40 N-8	40	8	27.5	11.5	20	11	M5	8	28
66865	MI.304/45 N-8	46	8	29.5	12.5	21.5	11	M5	8.4	39

Control knurled knobs

With pointer, Duroplast chrome-plated

MATERIAL

Phenolic based (PF) Duroplast chrome-plated, glossy finish.
Black pad-printed pointer index line, placed at 180° from the transverse pressure screw.

STANDARD EXECUTION

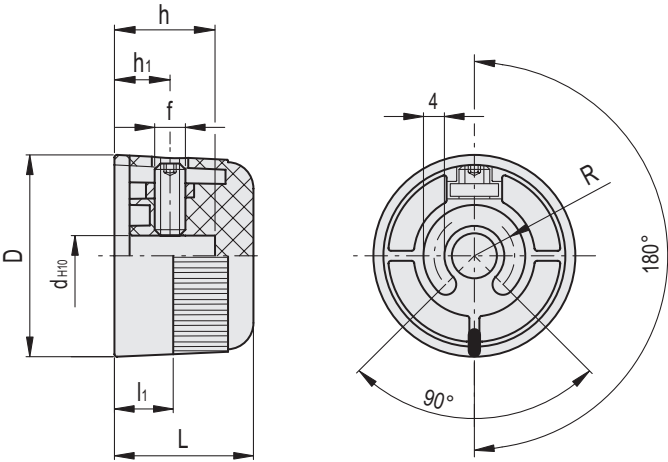
Plain blind hole, fixing by means of a transverse pressure screw according to UNI 5929-85 in AISI 304 stainless steel (headless screw with hexagonal socket and cupped end) which screws into the AISI 304 stainless steel nut. Supplied.

FEATURES

A limited manoeuvre angle is possible by fitting stop pins in the rear guide slot.



ELESA Original design



Code	Description	D	dH10	L	li	h	h1	f	R	△
152861	MI.304/35-CR N-6	35	6	24.5	10	18	11	M5	6.2	21
152863	MI.304/40-CR N-8	40	8	27.5	11.5	20	11	M5	8	30
152865	MI.304/45-CR N-8	46	8	29.5	12.5	21.5	11	M5	8.4	41

Control knurled knobs

With pointer, Duroplast

MATERIAL

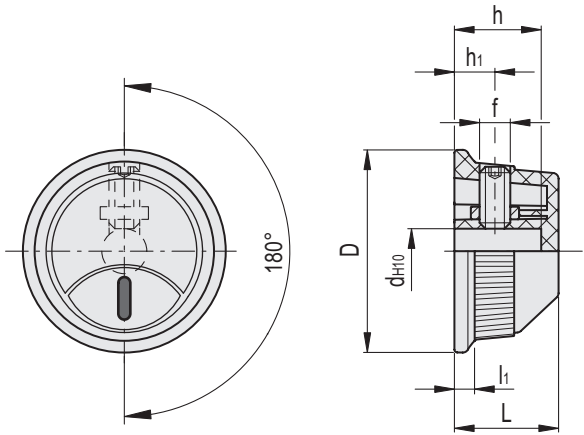
Phenolic based (PF) Duroplast, black colour, glossy finish.
White pad-printed index line, placed at 180° from the transverse pressure screw.

STANDARD EXECUTION

Plain blind hole, fixing by means of a transverse pressure screw according to UNI 5929-85 in AISI 304 stainless steel (headless screw with hexagonal socket and cupped end) which screws into the AISI 304 stainless steel nut. Supplied.



ELESA Original design



Code	Description	D	dH10	L	l1	h	h1	f	
66851	MI.404/35 N-6	35	6	18	3,5	15	7	M5	11
66853	MI.404/40 N-8	40	8	20,5	4	17,5	7	M5	17
66855	MI.404/45 N-8	45	8	23	5	15	10	M5	19

Control knurled knobs

With pointer, Duroplast chrome-plated

MATERIAL

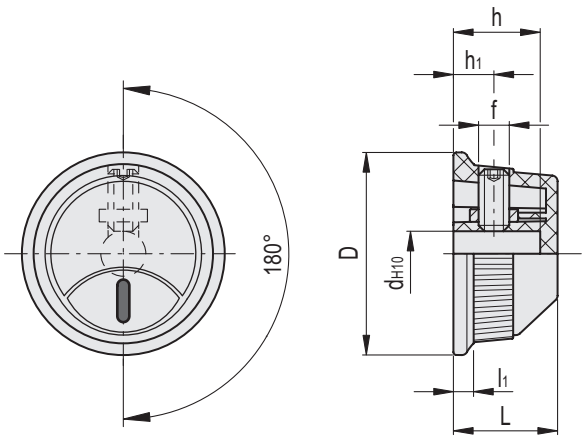
Phenolic based (PF) Duroplast chrome-plated, glossy finish.
Black pad-printed pointer index line, placed at 180° from the transverse pressure screw.


STANDARD EXECUTION

Plain blind hole, fixing by means of a transverse pressure screw according to UNI 5929-85 in AISI 304 stainless steel (headless screw with hexagonal socket and cupped end) which screws into the AISI 304 stainless steel nut. Supplied.



ELESA Original design



Code	Description	D	dH10	L	li	h	h1	f	
152851	MI.404/35-CR N-6	35	6	18	3.5	15	7	M5	12
152853	MI.404/40-CR N-8	40	8	20.5	4	17.5	7	M5	19
152855	MI.404/45-CR N-8	45	8	23	5	15	10	M5	21