



E3 VISE ACTION® Compression Latch

Stainless steel housing · Tool operated
Compact · Fixed grip · 20.1mm size

- Minimal panel intrusion
- Consistent pre-set compression
- Corrosion resistance
- Tool operated for security
- EN 45545-3 E60 Compliant



Material and Finish

Stainless steel 316 (MIM)

Performance Details

Compression: 6.4 mm (.25 in)
Maximum static load: 300 N (67 lbf)

Sealing Notes

NEMA 4 and IP65 enabled by using supplied flange gasket

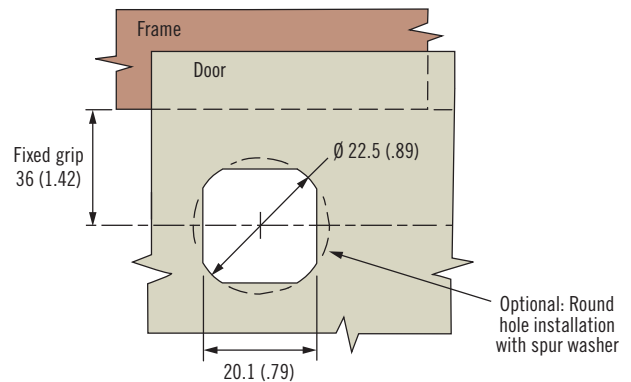
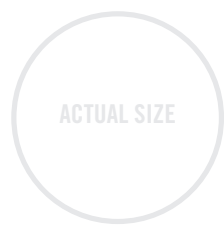
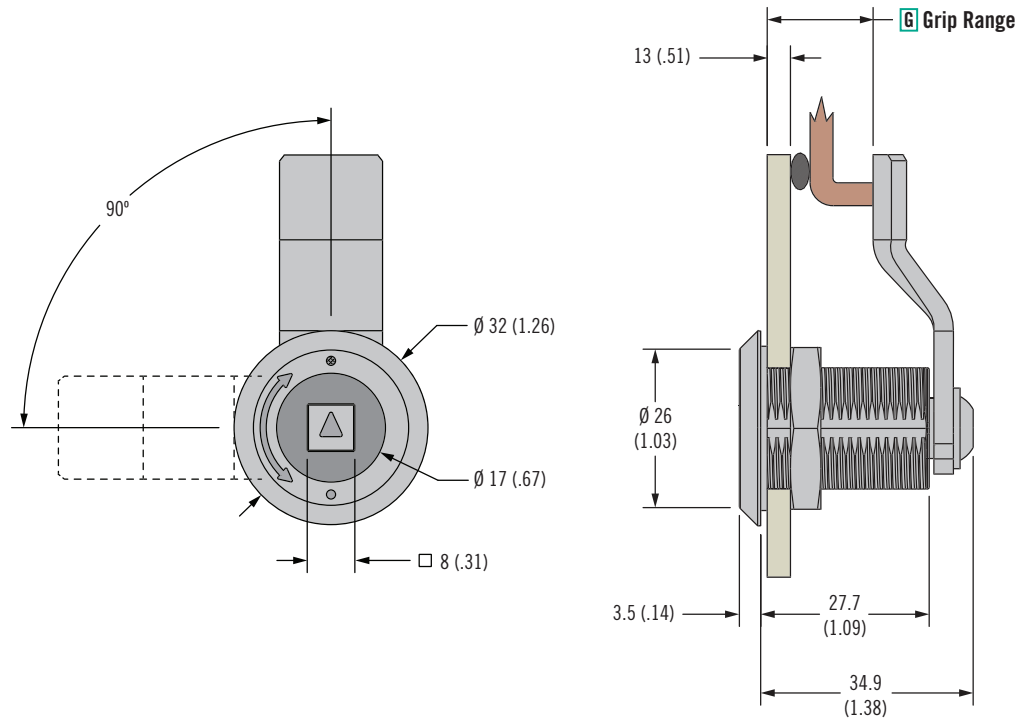
Installation Notes

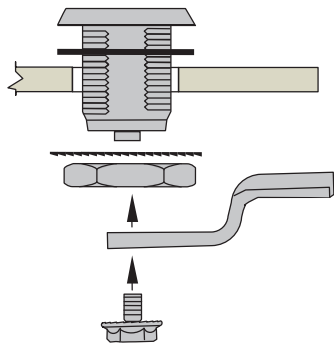
Recommended tightening torque for the mounting nut is 20 N-m (176 in-lbf)
Fixed Grip: Mounting screw torque 10 N-m (88 in-lbf)

Keys and Accessories

See pages 118-121

FIXED GRIP

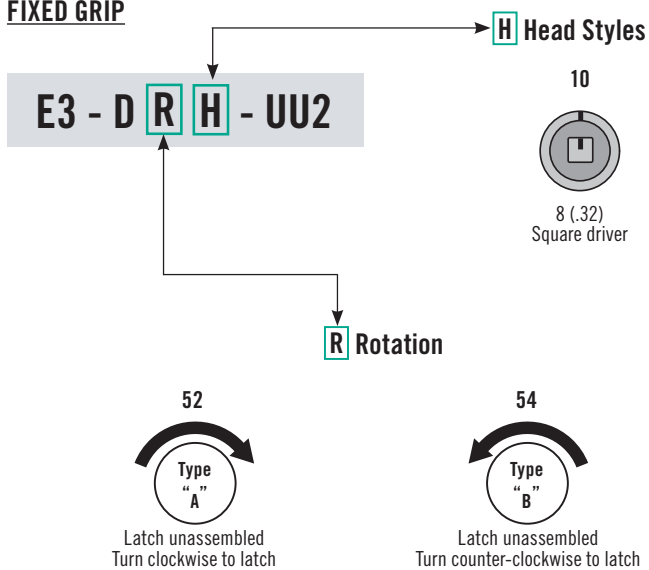




Part Number Selection

See table
Order latch and cam separately.

FIXED GRIP

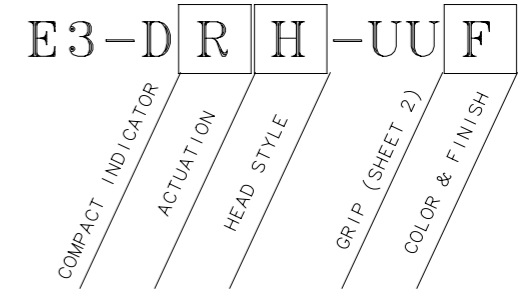


Cam Part Number (order separately from latch)			
Grip	Part Number	Grip	Part Number
10 (.39)	E3-28-700-24	30 (1.18)	E3-28-710-24
12 (.47)	E3-28-701-24	32 (1.26)	E3-28-711-24
14 (.55)	E3-28-702-24	34 (1.34)	E3-28-712-24
16 (.63)	E3-28-703-24	36 (1.42)	E3-28-713-24
18 (.71)	E3-28-704-24	38 (1.50)	E3-28-714-24
20 (.79)	E3-28-705-24	40 (1.57)	E3-28-715-24
22 (.87)	E3-28-706-24	42 (1.65)	E3-28-716-24
24 (.94)	E3-28-707-24	44 (1.73)	E3-28-717-24
26 (1.02)	E3-28-708-24	46 (1.81)	E3-28-718-24
28 (1.10)	E3-28-709-24	48 (1.89)	E3-28-719-24

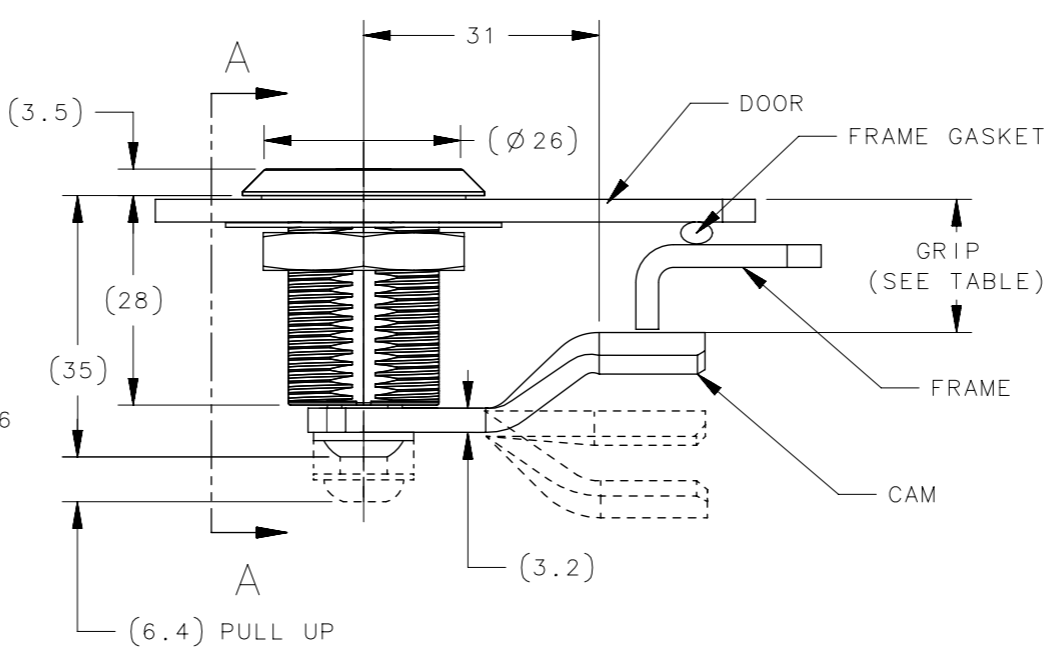
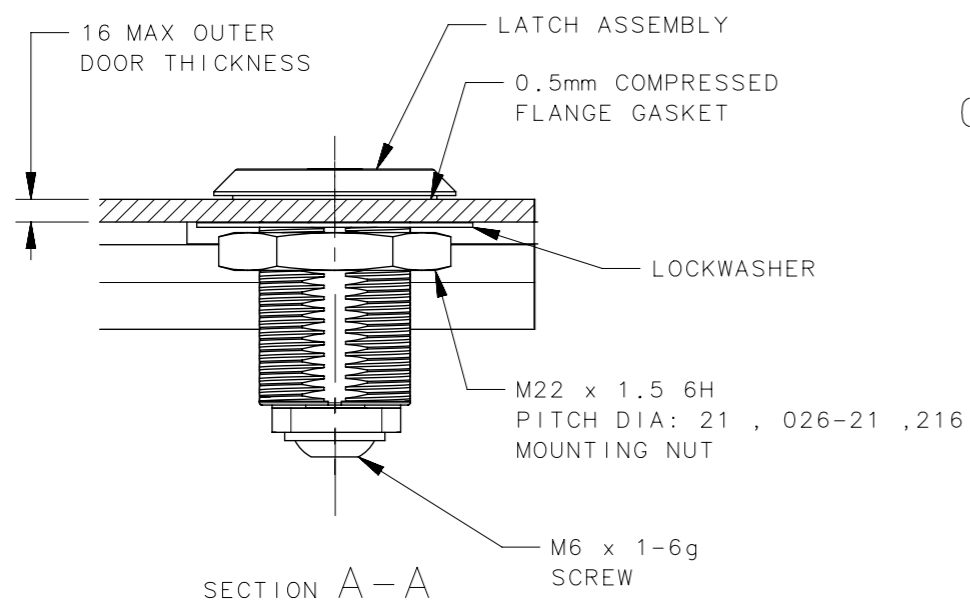
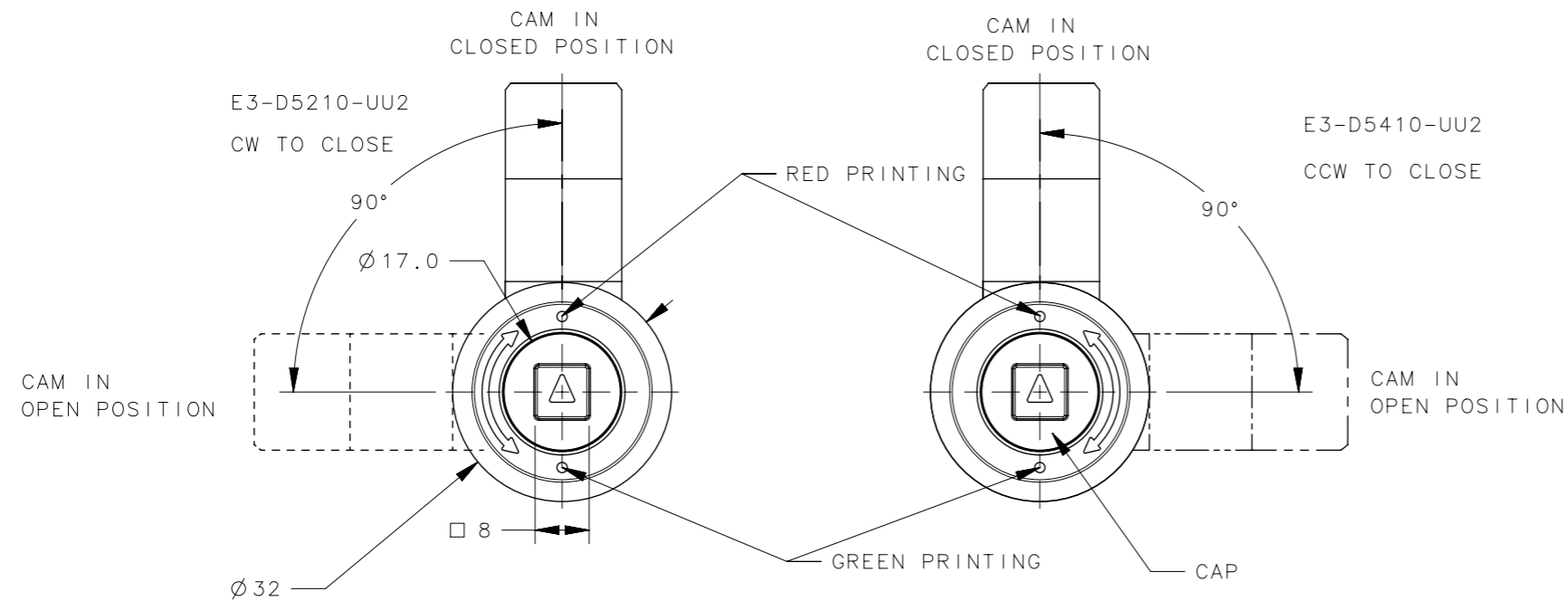
Select grip from Cam table.
If your grip is between two options
choose the smaller grip.

REVISION HISTORY			
REV	DATE	BY	DESCRIPTION
B	13AUG2024	GJL/SAK	PRN: P2024-1388

STANDARD PART NUMBER



- R** = ACTUATION STYLE
- 52 = TYPE A CLOCKWISE TO LATCH - LATCH UNASSEMBLED
 - 54 = TYPE B COUNTER-CLOCKWISE TO LATCH - LATCH UNASSEMBLED
- UU** = GRIP
- CAM ORDERED SEPARATELY, FOR CAM PART NUMBERS AND RESULTING GRIP DISTANCE SEE CAM TABLE
- H** = HEAD STYLE
- 10 = 8mm SQUARE
- F** = FINISH
- 2 = MIM-ELECTROPOLISHED

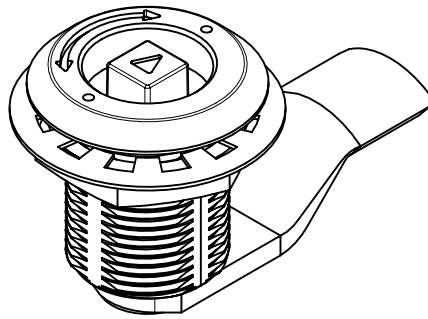


- NOTES:
- CLOSE OPERATION: 180° TURN OF CAP OR KEY CAUSES CAM TO ROTATE THEN PULL UP AS SHOWN.
 - INSTALLTION:
 - INSERT LATCH INTO THE HOLE OF THE DOOR IN THE UNLATCHED POSITION.CHECK FOR PROPER ORIENTATION AND OPERATION OF CAM.
 - INSTALL LOCKWASHER AND MOUNTING NUT ONTO HOUSING. RECOMMENDED TIGHTENING TORQUE FOR MOUNTING NUT IS 20Nm AND THE MOUNTING SCREW IS 10Nm.
 - THE RECOMMENDED MAX LATCH CLOSING TORQUE IS NO MORE THAN 7.9Nm.
 - MAX. STATIC LOAD: REFER TO TD-E3-D5.
 - VISIBLE SURFACE AFTER INSTALLATION WILL HAVE BRIGHT ELECTROPOLISHED FINISH AND OTHER SURFACES WILL HAVE ELECTROPOLISHED FINISH.

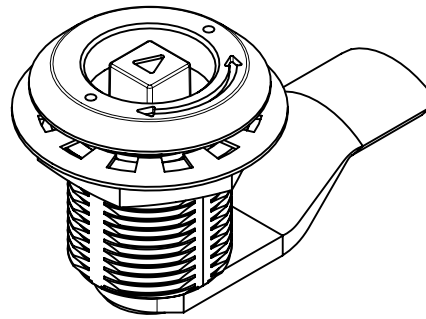
DESCRIPTION	MATERIAL	FINISH
GASKET SEAL	BUNA-N	BLACK
MOUNTING NUT	STAINLESS STEEL	PASSIVATION
LOCK WASHER	STAINLESS STEEL	PASSIVATION
SCREW	STAINLESS STEEL	PASSIVATION
CAM	STAINLESS STEEL	PASSIVATION
PIN	1008 STEEL	ZINC PLATE
SHAFT	STAINLESS STEEL	PASSIVATION
INTERNAL CAM	1075 STEEL	ZINC COATING
SLEEVE	1075 STEEL	ZINC COATING
O-RING	BUNA-N	NATURAL
SPRING	STAINLESS STEEL	NATURAL
RETAINER	STAINLESS STEEL	NATURAL
CAP	STAINLESS STEEL	ELECTROPOLISH
HOUSING	STAINLESS STEEL	ELECTROPOLISH

THIRD ANGLE PROJECTION	MILLIMETERS [IN]		
TOLERANCES UNLESS OTHERWISE NOTED		E3 COMPACT, MIM	
ALL DIMENSIONS WITHOUT TOLERANCES ARE FOR REFERENCE ONLY.		FIXED GRIP, 180 DEGREE	
PROPRIETARY ITEM	SIZE A3	SYSTEM NX	DWG NO. J-E3-D5H-02
EXCEPT FOR USES EXPRESSLY GRANTED IN WRITING, INFORMATION DISCLOSED HEREON IS CONFIDENTIAL AND ALL RIGHTS, PATENT AND OTHERWISE, ARE RESERVED BY SOUTHCO, INC.	PER ASME Y14.5M-2009	DRAWN BY HDF	DATE 30AUG2023
		SCALE 1:1	SHEET 1 OF 2

E3-D5210-UU2

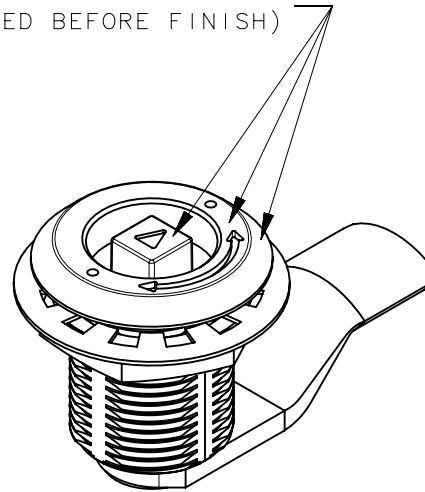
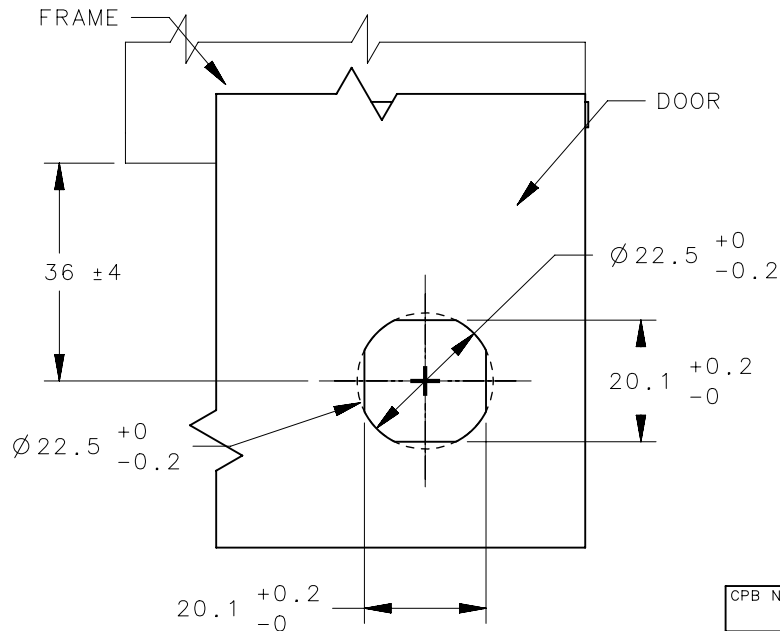


E3-D5410-UU2



GLOSSY ELECTROPOLISH FINISH
(SURFACE MACHINED BEFORE FINISH)

INSTALLATION VIEW



REVISION HISTORY

REV	DATE	BY	DESCRIPTION
B	13AUG2024	GJL/SAK	PRN: P2024-1388

CAM PART NUMBER (ORDERED SEPARATELY)

TOTAL GRIP (mm)	CAM PART NUMBER
-	NO CAM
10	E3-28-700-24
12	E3-28-701-24
14	E3-28-702-24
16	E3-28-703-24
18	E3-28-704-24
20	E3-28-705-24
22	E3-28-706-24
24	E3-28-707-24
26	E3-28-708-24
28	E3-28-709-24
30	E3-28-710-24
32	E3-28-711-24
34	E3-28-712-24
36	E3-28-713-24
38	E3-28-714-24
40	E3-28-715-24
42	E3-28-716-24
44	E3-28-717-24
46	E3-28-718-24
48	E3-28-719-24

CPB NUMBER	THIRD ANGLE PROJECTION	southco [®] CONNECT • CREATE • INNOVATE	
	MILLIMETERS [IN]		
SURFACE AREA	TOLERANCES UNLESS OTHERWISE NOTED	DESCRIPTION E3 COMPACT, MIM FIXED GRIP, 180 DEGREE	
VOLUME	ALL DIMENSIONS WITHOUT TOLERANCES ARE FOR REFERENCE ONLY.	SIZE A4	SYSTEM NX
PROPRIETARY ITEM EXCEPT FOR USES EXPRESSLY GRANTED IN WRITING, INFORMATION DISCLOSED HEREON IS CONFIDENTIAL AND ALL RIGHTS, PATENT AND OTHERWISE, ARE RESERVED BY SOUTHCO, INC.	PER ASME Y14.5M-2009	DWG NO. J-E3-D5H-02	
	DRAWN BY HDF	DATE 30AUG2023	SCALE 1:1 SHEET 2 OF 2

BS EN 45545-3:2013 Compliance Declaration

Dated: 2025-02-10

Southco is dedicated to serving our customers with high quality engineered access hardware solutions, while protecting the environment and meeting applicable regulatory requirements. For the most up to date information, or to download regulatory or compliance documents for any Southco product, please search by part number, or visit the resource section of our website.

This is to certify that Southco part number E3-105-090 is in compliance with the requirements of the British/European Standard BS EN 45545-3:2013, Integrity criterion E60, concerning the fire resistance requirements and testing methods for fire barriers for railway vehicles.

Fire performance is categorized by parameters according to the principles described in EN 13501-2. The Integrity criterion “E”, designates the period of time in which the specimen has the ability to prevent the passage through it of flames and hot gases and to prevent the occurrence of flame on the unexposed side.

Certification is limited to parts as produced by Southco. No warranty is made for parts that have been further processed by any party, or stored in uncontrolled environments.

For additional compliance information not addressed here, or on our website above, please contact our global compliance team at techsupport@southco.com.

Form E3-105-090

Southco. Inc. P.O. Box 0116 210 N. Brinton Lake Road Concordville PA 19331-0116 USA Phone +1 610 459 4000
Fax: +1 610 459 4012 info@southco.com www.southco.com